



+SENSE

senses your outdoor living



PROJECT

THE VILLAGE COCONUT ISLAND BEACH RESORT, PHUKET

**NATURE IS ALIVE  
AND TALKING  
TO US..**





RR8  
RR8-Net I  
RR8-Net II  
RR8-Bind  
FR16



## Ryo Collection

Designed by **Apirat Boonruangthaworn**

### Dining Chair

W: 54 D: 59 H: 79 cm

### Dining Chair without Armrest

W: 41.5 D: 59 H: 79 cm

### Dining Table

W: 60/70/80/90 D: 60/70/80/90 H: 74 cm

### Low Dining Chair

W: 59.5 D: 63.5 H: 79 cm

### Easy Chair

W: 75 D: 90 H: 68 cm

### Ottoman

W: 75 D: 75 H: 38 cm

### 2-Seater Sofa

W: 160 D: 90 H: 68 cm



RR8-Bind



FR16-Bind



RR8-Net II  
FR16-Bind



RR8-Bind  
FR16-Bind



RR8-Net II  
FR16-Bind



RR8-Net I



## Scandinav Dining Chair

Designed by **Apirat Boonruangthaworn**

W: 53 D: 52 H: 77 cm

## Quad Dining Table

Designed by **Surin Trangkanont**

W: 60/70/80/90 D: 60/70/80/90 H: 74 cm

## Sparse Dining Chair

Designed by **Apirat Boonruangthaworn**

Dining Chair

W: 53 D: 57 H: 82 cm

Dining Chair without Armrest

W: 50 D: 57 H: 82 cm



RR8-Net II  
RR8-Bind



RR8-Net II

## Horn Easy Chair

Designed by **Kanokpong Chucherd**

W: 68 D: 75 H: 70 cm



RR8-Net II

## Horn Sofa

Designed by **Kanokpong Chucherd**

W: 160 D: 75 H: 70 cm



RR8-Net I  
RR8-Net II  
FR16  
FR16-Pikul  
Non Weaving

## Myittha Easy Chair

Designed by **Apirat Boonruangthaworn**

W: 68 D: 80 H: 75 cm



RR8-Net I  
RR8-Net II  
FR16  
FR16-Pikul  
Non Weaving

## Myittha Sofa

Designed by **Apirat Boonruangthaworn**

W: 160 D: 80 H: 75 cm (2-Seater Sofa)  
W: 200 D: 80 H: 75 cm (3-Seater Sofa)



## Wing Dining Table

Designed by **Jutawat Apiwattanawong**

W: 240 D: 90 H: 74 cm



FR16-Bind

### Bord Easy Chair

Designed by **Apirat Boonruangthaworn**

W: 75 D: 83 H: 74 cm



RR8-Bind



FR16-Bind

### Bord Low Dining Chair

Designed by **Apirat Boonruangthaworn**

W: 53 D: 52 H: 77 cm



### Plank Occasional Table

Designed by **Apirat Boonruangthaworn**

W: 40 D: 85 H: 42 cm



### Pymid Occasional Table

Designed by **Apirat Boonruangthaworn**

W: 70 D: 120 H: 35 cm (Coffee Table)  
W: 50 D: 85 H: 35 cm (Side Table)



### Pymid Modular Sofa

Designed by **Apirat Boonruangthaworn**

RR8-Net I  
RR8-Net II  
FR16-Net II

### Pymid 1-Seater Sofa

W: 90 D: 85 H: 64 cm



### Pymid Basic

W: 85 D: 85 H: 35 cm



### Pymid Center

W: 80 D: 85 H: 64 cm



### Pymid Corner

W: 85 D: 85 H: 64 cm



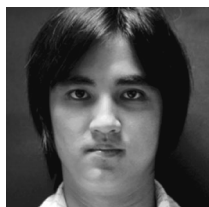
### Pymid Corner Back

W: 85 D: 85 H: 64 cm

## DESIGN TEAM



Apirat Boonruangthaworn  
Design Director



Surin Trangkanont  
Designer



Kanokpong Chucherd  
Designer



Pannawit Pimpuwanon  
Designer



Jutawat Apiwattanawong  
Designer



### Witch Occasional Table

Designed by **Pannawit Pimpuwanon**

Dia: 38 H: 52.5 cm



### Myittha Occasional Table

Designed by **Apirat Boonruangthaworn**

W: 80 D: 120 H: 55 cm



FR16

### Quad Occasional Table

Designed by **Apirat Boonruangthaworn**

W: 59 D: 59 H: 38 cm



RR13-Bind

### Jungle Easy Chair

Designed by **Kanokpong Chucherd**

W: 80 D: 83 H: 74 cm



### Arabian Outdoor Sofa Bed

W: 200 D: 120 H: 220 cm (Sofa)

W: 200 D: 80 H: 12.6 cm (Coffee Table)



RR8-Net I

## WEAVING PATTERN :



RR8



RR8-net 1



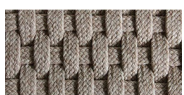
RR8-net 2



RR8-Bind



RR13-Bind



FR16



FR16-net 1



FR16-net 2



FR16-Bind



FR16-Pikul

## COLOR:



Driftwood



Grey



Mortar



Charcoal Grey



Navy



Blue



# +SENSE

senses your outdoor living

**PLUSSENSE Co.,Ltd.**

18/2 Moo 13 Phetkasem91 Rd.,  
Om Noi, Krathum Baen,  
Samut Sakhon, 74130, Thailand

T: 66(0) 3 413 0388, 66(0) 8 7740 1100

F: 66(0) 3 413 0388

M: 66(0) 6 2453 5500

E: [contact@plus-sense.com](mailto:contact@plus-sense.com)

[plus-sense@outlook.com](mailto:plus-sense@outlook.com)

W: [www.plus-sense.com](http://www.plus-sense.com)